

ABERDEEN CITY COUNCIL

COMMITTEE	Education, Culture and Sport
DATE	8 October 2009
DIRECTOR	Annette Bruton
TITLE OF REPORT	Education, Culture & Sport Performance Report August 2009
REPORT NUMBER	ECS/09/022

1. PURPOSE OF REPORT

The purpose of this report is to:

1. Provide to Members an update on Education, Culture and Sports Performance as at August 2009.
2. The report outlines key indicators of performance in Resources Management, Impact and Business processes across Education, Library and Information Services and Sports, Culture and Heritage Services. Additional tables and spreadsheets are included at Appendix 1 and 2 outlining detailed performance and trends.

2. RECOMMENDATION(S)

It is recommended that the Committee:

- (i) Note the trends in performance; and
- (ii) Instruct that quarterly reports are presented to Committee as part of the Education, Culture and Sports Public Performance Reporting Framework

3. FINANCIAL IMPLICATIONS

There are no direct financial implications arising from this report, however, adherence to revenue and capital budgets is a performance measure for each function. There may be, however, new or extra costs associated with performance improvements where additional resource or support is required across the Service. It would be anticipated that, wherever possible, these additional costs would normally be met within existing resources.

4. SERVICE & COMMUNITY IMPACT

There are no direct implications arising from this report but the purpose of performance measurement and reporting is to manage improvement to services to the community. The work also links directly to the Single Outcome Agreement (SOA) and the themes contained in "Improving Scottish Education." Improvements in Education, Culture and Sports services have a positive impact on the communities they serve and in the lives of children, young people and their families.

5. OTHER IMPLICATIONS

This will be of interest to key stakeholders across the Education, Culture and Sports Service, our parents, pupils and staff and will be of media interest.

6. REPORT

6.1 Background

Members will recall at Policy and Strategy (Education) Committee in June 2009, that approval was given for a set of measures and targets for the interim Culture and Learning Service. At that stage, 23 Key Performance Indicators (KPIs) were compiled following consultation with Service Managers and Heads of Service. These included the 2008/2009 Statutory Performance Indicators which are used to demonstrate Best Value.

6.2 Performance Scorecard: Measures and Improvement Targets

This report now seeks to confirm the performance measures and improvement targets to be reported to the Education, Culture and Sport Committee for the functions of the Education, Culture and Sport service. Attached at **Appendix 1** is the performance scorecard for the original 23 KPIs, together with 3 additional measures of performance.

The scorecard shows:-

- recent performance (trends)
- targets, where available
- a "traffic light" where green = performance in the top quartile or significant improvement, amber = some concerns regarding performance, red = significant improvement required

6.3 Detailed performance: August 2009

In addition, attached at **Appendix 2** are 'Drill Down' performance measure sheets. These detailed sheets correspond to measures on the "scorecard" and will, in the main, be different for each performance report. They show:-

- a definition of the measure

- a graphical representation of the performance
- longer term trends of performance
- analysis of what the performance means
- recommended actions to be taken for improvement

Detailed performance in this report is available for the following 5 indicators:

- Academic achievement of Looked After Children (2008)
- Primary and Secondary pupil attainment for reading, writing & mathematics (2009)
- Cumulative attainment in National Qualifications by all pupils in publicly funded secondary schools for S4,S5 and S6 (2009)
- A summary of Library and Information Services Statistics (up to July 2009)
- Admissions to Sports Facilities (up to July 2009)

6.4 Target Setting

As part of the normal management of performance, it is appropriate to formally review the Service targets set for the key performance measures for the 2009/10 year and beyond. The review of targets will follow the principles of SMART; each target will be Specific, Measurable, Achievable, Realistic and Timely. There is a clear balance to be struck between being realistic and being challenging. Targets set at the right level, and which are a constant focus for members and officers, can be a motivation to improved performance.

7. REPORT AUTHOR DETAILS

Sarah Gear, Strategist Quality Assurance and Performance Management
Education, Culture & Sport

☎ 01224 522676

✉ sagear@aberdeencity.gov.uk

8. BACKGROUND PAPERS

Attached at Appendix 1: the Education, Culture and Sports Summary Scorecard and at Appendix 2: detailed performance measures

**APPENDIX 1
EDUCATION, CULTURE AND SPORTS SCORECARD SUMMARY**

	Performance Measure	Outturn 2008-09	Target 2008-09	Proposed target 2009-10	Comment and Benchmarking
Resources Management					
1.	Average number of days lost through sickness absence	Local Government workers – 14.2 Teachers - 7.2	11.8 days (Corporate Target)	11.3 days	Corporate 09/10 target for this SPI is 11.3 days. Sickness absence is a Statutory Performance Indicator. The corporate outturn figures for Local Government workers is provided as the required level of detail for Education, Culture & Sport is not available for previous years as this is a new service. This will be measured on a monthly basis in future from PSE (Employee Record/Payroll System).
2.	% spend against revenue budget	-	100%	100%	Cannot overspend on cash limited budget. Equally, there should be no “slack” built into budgets leading to underspends. This is part of a separate report to Committee
3.	% projected variance from revenue budget at year end	-	0%	0%	As 2. above
4.	% spend against capital budget	-	100%	100%	Cannot overspend on approved capital projects. Equally, all steps should be taken to complete capital projects within anticipated timeframes. This is part of a

	Performance Measure	Outturn 2008-09	Target 2008-09	Proposed target 2009-10	Comment and Benchmarking
					separate report to Committee
5.	% savings on target to be delivered	-	100%	100%	Must be 100% to deliver corporate savings. This will form part of a separate report to Committee
6.	Score for compliance with health & safety matrix	97%	100%	100%	100% indicates that we have complied with the key elements of health & safety. As far as we are aware, Aberdeen City Council is the only Scottish Council which operates a scored matrix for health and safety, which allows for internal benchmarking.
6.1	% of Internal Audit recommendations completed	90%	-	-	This performance measure is reported regularly to Education, Culture and Sports SMT and is anticipated to form regular reports to Audit and Risk Committee
Impact					
7.	The proportion of schools receiving positive inspection reports	93.6%	Improvement	Improvement	This performance measure was reported to E, C & S Committee in August 2009. This is considered good performance and surpassed the 2007/08 target of 83%. This has been included in the 2009/10 SOA. This measure is not yet ranked nationally

	Performance Measure	Outturn 2008-09	Target 2008-09	Proposed target 2009-10	Comment and Benchmarking
8.	HMle inspections of learning communities result in positive reports in relation to Q.I. 2.1 Impact on young people and adults as participants	100%	100%	100%	<p>This performance measure was reported to E, C & S Committee in August 2009. This is considered very good performance.</p> <p>This has been included in the 09/10 SOA. This measure is not yet ranked nationally</p>
9.	Positive reports from HMle Inspections in relation to Quality Indicator (QI) 4.1 Impact on Communities over the year	100%	100%	100%	<p>This performance measure was reported to E, C & S Committee in August 2009. This is considered very good performance.</p> <p>This has been included in the 09/10 SOA. This measure is not yet ranked nationally</p>
10.	Primary & Secondary pupil attainment for reading, writing & maths.	Primary: Reading:79%, Maths: 82%, Writing:74%	Primary: Reading:84%, Maths: 88%, Writing:77%	Primary: Reading:87%, Maths:90%, Writing:79%	<p>Included within 0809 & 09/10 SOA. Please refer to spreadsheet at Appendix 2 for detailed analysis.</p> <p>A review of 5-14 performance across the City and including target-setting, will be undertaken in the light of 2008/2009 outturn.</p>
		Secondary: Reading:67% Maths: 58% Writing:51%	Secondary: Reading:72%, Maths:67%, Writing:54%	Secondary: Reading:74%, Maths:69%, Writing:55%	

	Performance Measure	Outturn 2008-09	Target 2008-09	Proposed target 2009-10	Comment and Benchmarking
					This will in time be superseded by Curriculum For Excellence age and stage measures, with appropriate benchmarking.
11.	Cumulative attainment of National Qualifications by all pupils in publicly funded secondary schools for S4 and S5.	<u>English and Maths at level 3 by the end of S4</u> 94%	<u>English and Maths at level 3 by the end of S4</u> 96%	<u>English and Maths at level 3 by the end of S4</u> Improvement	This has been included in the 2009/10 SOA as a directional target i.e. improvement, but with no figure. Please refer to spreadsheet at Appendix 2 for detailed analysis
		<u>5 or more level 3 awards by the end of S4</u> 91%	<u>5 or more level 3 awards by the end of S4</u>	<u>5 or more level 3 awards by the end of S4</u> Improvement	This will in time be superseded by the new Qualifications framework and comparisons made on that basis.
		<u>5 or more level 5 awards by the end of S5</u> 42%	<u>5 or more level 5 awards by the end of S5</u> 47%	<u>5 or more level 5 awards by the end of S5</u> Improvement	
12.	Proportion of school leavers in positive and	Outturn 07-08	90% in positive	90% in positive	

	Performance Measure	Outturn 2008-09	Target 2008-09	Proposed target 2009-10	Comment and Benchmarking
	sustained destinations	Young people aged 16-19 85.6% in positive destinations. 51.4% of school leavers from special education in positive destinations	destinations	destinations	December. Included as outcome within 0809 & 0910 SOA. The SOA sets a target of 6% outwith positive destinations by 2011. The SOA target is for a year on year improvement of 5% from the 2006/07 baseline of 82% positive destinations. This measure is not ranked nationally.
13.	Academic achievement: the number and percentage of young people ceasing to be looked after, who achieved SCQF level 3 or better in English and Maths or other subjects	Outturn 08/09 55.6%	61.3%	72.2%	Data for this SPI refers to academic performance for the 07/08 session and is collected in the financial year 2008/09. Please refer to spreadsheet at Appendix 2 for detailed analysis It is intended that 2008/2009 session data for this indicator will be reported in the next performance report in December. Included as a 0809 & 0910 SPI. The SOA sets the target as a progressive improvement in the outcome to improve the life chances of looked after children. This measure is not ranked nationally.
13.1	Violent Incidents against	Outturn 07/08			Data for this indicator refers to academic

	Performance Measure	Outturn 2008-09	Target 2008-09	Proposed target 2009-10	Comment and Benchmarking
	School staff in Primary, Secondary and Special Schools	Primary- 225 Secondary - 309 Special - 304	Primary – 307 Secondary – 228 Special - 228	Primary – 256 Secondary – 190 Special - 190	performance for the 07/08 session. 2008/2009 data for this indicator will be reported in the next performance report in December. This measure is not ranked nationally
13.2	% occupancy of Primary and Secondary schools	Outturn 08/09 Primary Below 60% - 31% 61-100% - 69% Secondary Below 60% - 8% 61-100% - 92%	60% capacity as minimum	60% capacity as minimum	Data for this Statutory Performance Indicators (SPI) refers to the pupil census undertaken in September 2008 and is collected in the financial year 2008/09. Ranking data was not published for 2008/2009. It is anticipated that 2009/2010 data for this indicator will be reported, using the September 2009 census data, in the next performance report in January 2010.
14.	% of Service Plan tasks complete or on schedule	-	100%	100%	This indicator will be reported in the next performance report in December following the completion of the new Service Plan for Education, Culture and Sports. Fully deliver on service tasks
Business Processes					
15.	CC 1 Sport and Leisure	2710	2,895	2,940	Pool maintenance issues and re-

	Performance Measure	Outturn 2008-09	Target 2008-09	Proposed target 2009-10	Comment and Benchmarking
	management – the number of attendances per 1,000 population for all pools				<p>instatement of Tullos pool have a negative impact on admissions for this SPI.</p> <p>Difficult to estimate the impact of Trust status. In 2007/08, we were ranked 18th in Scotland.</p>
16.	CC 2 Indoor facilities – the number of attendances per 1,000 population for other indoor sports and leisure facilities, excluding pools in a combined complex.	3,994	4,196	5,272	It is hoped that the re-instatement of Linx Ice Arena and the opening of the Aberdeen Sports Village will impact positively on admissions figures for this SPI. Difficult to estimate the impact of Trust status. In 2007/2008 we were ranked 14 th in Scotland.
17.	CC 3 (b) Museum services – the number of visits to/usages of council funded or part funded museums that were in person per 1,000 population	1,561	1,539	1,539	Continuation of the current level of visitors is expected for this SPI. There has been a reduction of opening hours, with closure on non--holiday Mondays. In 2007/2008, we were ranked 4 th in Scotland.
18.	CC 5 (a) Use of libraries – the number of visits to libraries per 1,000 population	5,841	6,000	6,000	This continues to be reported as an SPI. The decrease in opening hours will impact significantly. Estimated visit figures will decrease by at least 10%.

	Performance Measure	Outturn 2008-09	Target 2008-09	Proposed target 2009-10	Comment and Benchmarking
					09/10 Target reflects 1.7% decrease. In 2007/2008 we were ranked 10 th in Scotland
19.	CC 5 (b) Use of libraries – the number of borrowers as a percentage of the resident population	27.6%	28.0%	28.0%	No longer an SPI requirement but we will continue to report. We now include WiFi statistics which help balance the decrease in hard wired PC access where as above for CC5(a) at least 10% decrease expected. In 2007/2008, we were ranked 4 th in Scotland
20.	CC 3 (a) Museum services – the number of visits to/usages of council funded or part funded museums per 1,000 population	3,246	3,010	3,010	Continuation of the current level of visitors is expected for this SPI. There has been a reduction of opening hours, with closure on non--holiday Mondays. In 2007/2008, we were ranked 4 th in Scotland
21.	CC 6 (a) Learning centre and learning access points – number of users as a percentage of the resident population	18.2%	17.0%	17.0%	This is no longer an SPI requirement but we will continue to report. We now include WiFi statistics which help balance the decrease in hard wired PC access where as above for CC5(a) at least 10% decrease expected. In 2007/2008, we were ranked 6 th in Scotland

	Performance Measure	Outturn 2008-09	Target 2008-09	Proposed target 2009-10	Comment and Benchmarking
22.	% of success in dealing with written queries & complaints within 15 working days	81%	95%	95%	It is likely that throughout the year we will receive a small number of enquiries which, due to their complexity or through other factors, may take more than 15 working days to resolve. A target of 95% is considered challenging, but deliverable. The January 2009 position was 93%. We are yet to undertake benchmarking for this measure. Corporately we have researched the standard in setting a 15 working day limit and this is similar to our peers.
Organisational Learning & Improvement					
23.	% eligible staff appraised in past year	-	100%	100%	The Education, Culture and Sports Service is committed to Appraisal and Performance Review and Development and recognises the importance of these key elements of individual performance management. Arrangements will be put in place to measure this indicator on a monthly basis in future from PSE.

LAC Attainment SPI Data 2008/2009 Source : Social Work

<u>LAC Attainment SPI Data 2008/09</u>								
LAC Status	Achieving SQQF Level 3				Achieving SQQF Level 3 in English & Math			
	07/08	08/09	Variance	SOA RAG	07/08	08/09	Variance	SOA RAG
All Looked After Children	71.2 %	82.5%	11.3% ▲	Green	40.7%	55.6%	14.9% ▲	Green
Children Looked After At Home	70%	74.1%	4.1% ▲	Green	30%	59.3%	29.3% ▲	Green
Children Looked After Away from Home	71.8%	88.9%	17.1% ▲	Green	46.2%	52.8%	6.6% ▲	Green

5 to 14 Attainment - Primary Reading Attainment 2008/2009 (Source PM+QA team)

Definition	Percentage of P3, P4, P6 and P7 roll meeting or exceeding the appropriate levels in reading.																									
		2003/04	2004/05	2005/06	2006/07	2007/08	2008/09																			
	Aberdeen	78%	78%	77%	79%	80%	79%																			
	Consortium*	81%	81%	82%	83%	84%	84%																			
<p align="center">5 to 14 Reading Attainment in Primary Schools</p> <table border="1"> <caption>4 Year Targets(%)</caption> <tr><td>2003/04:</td><td>83</td></tr> <tr><td>2004/05:</td><td>83</td></tr> <tr><td>2005/06:</td><td>no target set</td></tr> <tr><td>2006/07:</td><td>79.4</td></tr> <tr><td>2007/08:</td><td>81.84</td></tr> <tr><td>2008/09:</td><td>84.37</td></tr> <tr><td>2009/00:</td><td>86.98</td></tr> </table> <p>Target - 3% increase year-on year to 2010</p>													2003/04:	83	2004/05:	83	2005/06:	no target set	2006/07:	79.4	2007/08:	81.84	2008/09:	84.37	2009/00:	86.98
2003/04:	83																									
2004/05:	83																									
2005/06:	no target set																									
2006/07:	79.4																									
2007/08:	81.84																									
2008/09:	84.37																									
2009/00:	86.98																									
Analysis:	<p>Attainment in reading is decreased by 1% from 2007/08 to 2008/09. 79% of pupils reached or exceed the appropriate level. Reading attainment in Aberdeen has always been below the national and consortium level since 1999/00. Out of 48 primary schools attainment in reading is higher in 17 schools. 25 schools reported a decrease and in 3 schools reading attainment level stayed the same as in 2007/08. Please note that there is no a trend data for three new primary schools. No statistically significant trend since 1999/00.</p>																									
Action:	<p>As part of the Quality Improvement Framework, Education Officers undertake School Improvement Visits throughout the year. Regular performance monitoring is undertaken on a school by school, proportionate basis. Further proposals to monitor 5-14 performance are currently being considered. Curriculum for Excellence will introduce age and stage measures in due course.</p>																									

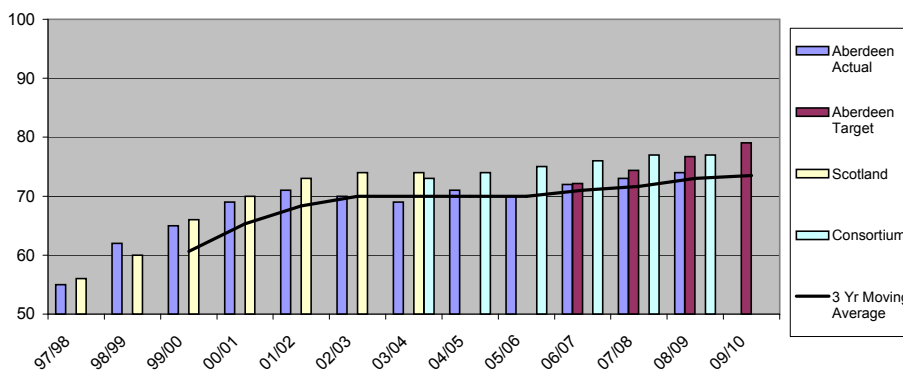
*Consortium data is aggregated data from LA's that have agreed to share data. Individual LA's data cannot be identified from consortium

	97/98	98/99	99/00	00/01	01/02	02/03	03/04	04/05	05/06	06/07	07/08	08/09	09/10
Aberdeen Actual	68	72	75	79	80	79	78	78	77	79	80	79	
Aberdeen Target										79.381	81.84	84.37	86.98
Scotland	70	73	76	80	81	81	81						
Consortium							81	81	82	83	84	84	

5 to 14 Attainment - Primary Writing Attainment 2008/2009 (Source PM+QA team)

Definition	Percentage of P3, P4, P6 and P7 roll meeting or exceeding the appropriate levels in writing.					
	2003/04	2004/05	2005/06	2006/07	2007/08	2008/09
Aberdeen	69%	71%	70%	72%	73%	74%
Consortium*	73%	74%	75%	76%	77%	

5 to 14 Writing Attainment in Primary Schools



4 Year Targets(%)	
2003/04:	74
2004/05:	74
2005/06:	no target set
2006/07:	72.2
2007/08:	74.4
2008/09:	76.7
2009/00:	79.07

Target - 3% increase year-on year to 2010

Analysis: Attainment in writing is increased by 1% from 2007/08 to 2008/09. 74% of pupils reached or exceed the appropriate level, the highest level since testing began. Writing attainment in Aberdeen has been below the national and consortium level since 1999/00. Out of 48 primary schools 20 schools reported a higher attainment in writing . 23 schools reported a decrease and in 2 schools writing attainment level stayed the same as in 2007/08. Please note that there is no a trend data for three new primary schools. Increase for 3 consecutive years. Statistically significant upward trend since 1999.

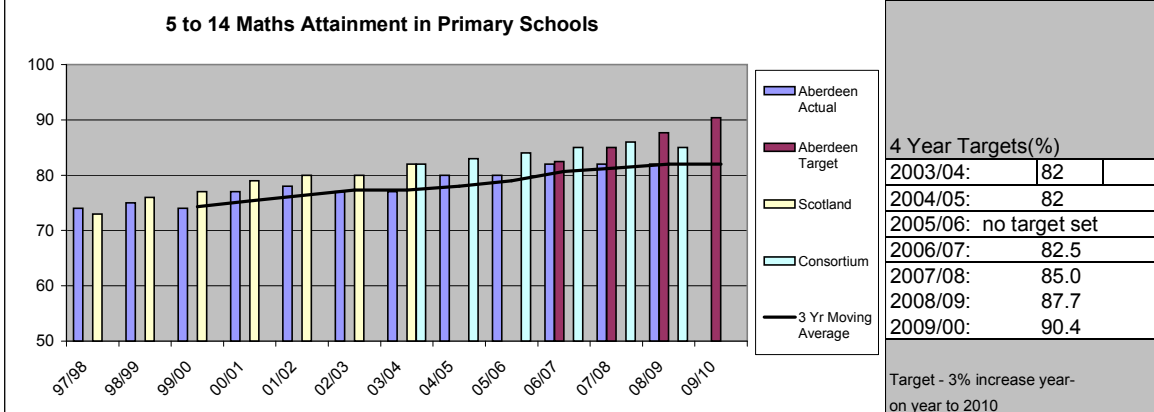
Action: As part of the Quality Improvement Framework, Education Officers undertake School Improvement Visits throughout the year. Regular performance monitoring is undertaken on a school by school, proportionate basis. Further proposals to monitor 5-14 performance are currently being considered. Curriculum for Excellence will introduce age and stage measures in due course.

*Consortium data is aggregated data from LA's that have agreed to share data. Individual LA's data cannot be identified from consortium da

	97/98	98/99	99/00	00/01	01/02	02/03	03/04	04/05	05/06	06/07	07/08	08/09	09/10
Aberdeen Actual	55	62	65	69	71	70	69	71	70	72	73	74	
Aberdeen Target										72.165	74.397	76.7	79.07
Scotland	56	60	66	70	73	74	74						
Consortium							73	74	75	76	77	77	

5 to 14 Attainment - Primary Mathematics Attainment 2008/2009 (Source PM+QA team)

Definition	Percentage of P3, P4, P6 and P7 roll meeting or exceeding the appropriate levels in mathematics						
	2003/04	2004/05	2005/06	2006/07	2007/08	2008/09	
Aberdeen	77%	80%	80%	82%	82%	82%	
Consortium*	82%	83%	84%	85%	86%	85%	



Analysis: Attainment in mathematics has not changed for three consecutive years. 82% of pupils reached or exceed the appropriate level, the highest level since testing began. Out of 48 primary schools 20 schools reported an increase. 22 schools reported a decrease and in 3 schools attainment in mathematics is the same as in 2007/08. Since 1998/99, mathematics attainment in Aberdeen has been below the national or consortium level. Please note that there is no a trend data for three new primary schools. Statistically significant upward trend since 1999.

Action: As part of the Quality Improvement Framework, Education Officers undertake School Improvement Visits throughout the year. Regular performance monitoring is undertaken on a school by school, proportionate basis. Further proposals to monitor 5-14 performance are currently being considered. Curriculum for Excellence will introduce age and stage measures in due course.

*Consortium data is aggregated data from LA's that have agreed to share data. Individual LA's data cannot be identified from consortium data set.

	97/98	98/99	99/00	00/01	01/02	02/03	03/04	04/05	05/06	06/07	07/08	08/09	09/10
Aberdeen Actual	74	75	74	77	78	77	77	80	80	82	82	82	
Aberdeen Target										82.4742	85.025	87.65	90.37
Scotland	73	76	77	79	80	80	82						
Consortium							82	83	84	85	86	85	

5 to 14 Attainment - Secondary Reading Attainment 2008/2009 (Source PM+QA team)

Definition	Percentage of S2 pupils meeting or exceeding level E in reading.												
				2003/04	2004/05	2005/06	2006/07	2007/08	2008/09				
	Aberdeen			65%	65%	65%	63%	63%	67%				
	Consortium*			64%	64%	66%	66%	67%	68%				
5 to 14 Reading Attainment in Secondary Schools													
										4 Year Targets(%) 2003/04: 63 2004/05: 63 2005/06: no target set 2006/07: 68(predicted) 2007/08: 70.1 2008/09: 72.27 2009/00: 74.51			
Target - 3% increase year-on year to 2010													
Analysis:	The proportion of S2 pupils meeting or exceeding level E in reading has increased by 4% from 2007/08 to 2008/09. Aberdeen equalled or exceeded the national average reading attainment between 1998/99 and 2003/04. Ten schools reported an increase in S2 reading attainment and 2 schools reported decreases. Statistically significant upward trend since 1997/98.												
Action:	As part of the Quality Improvement Framework, Education Officers undertake School Improvement Visits throughout the year. Regular performance monitoring is undertaken on a school by school, proportionate basis. Further proposals to monitor 5-14 performance are currently being considered. Curriculum for Excellence will introduce age and stage measures in due course.												

*Consortium data is aggregated data from LA's that have agreed to share data. Individual LA's data cannot be identified from consortium data set.

	97/98	98/99	99/00	00/01	01/02	02/03	03/04	04/05	05/06	06/07	07/08	08/09	09/10
Aberdeen Actual	41	51	56	57	59	63	65	65	65	63	63	67	
Aberdeen Target							63	63		68	70.1	72.27	74.51
Scotland	41	45	53	56	59	61	65						
Consortium							64	64	66	66	67	68	

5 to 14 Attainment - Secondary Writing Attainment 2008/2009 (Source PM+QA team)

Definition	Percentage of S2 pupils meeting or exceeding level E in writing.						
	2003/04	2004/05	2005/06	2006/07	2007/08	2008/09	
	Aberdeen	46%	50%	49%	50%	51%	
	Consortium*	51%	51%	53%	53%	55%	

5 to 14 Writing Attainment in Secondary Schools

4 Year Targets(%)

2003/04:	51
2004/05:	51
2005/06:	no target set
2006/07:	51(predicted)
2007/08:	52.08
2008/09:	53.69
2009/00:	55.35

Target - 3% increase year-on year to 2010

Analysis:	The proportion of S2 pupils meeting or exceeding level E in writing has increased by 1% from 2007/08 to 2008/09. Aberdeen writing attainment in S2 has always been below the national average. Six secondary schools reported an increase in S2 writing attainment; four schools reported decreases and two schools stayed at same level. Statistically significant upward trend since 1997/98.
Action:	As part of the Quality Improvement Framework, Education Officers undertake School Improvement Visits throughout the year. Regular performance monitoring is undertaken on a school by school, proportionate basis. Further proposals to monitor 5-14 performance are currently being considered. Curriculum for Excellence will introduce age and stage measures in due course.

*Consortium data is aggregated data from LA's that have agreed to share data. Individual LA's data cannot be identified from consortium data set.

	97/98	98/99	99/00	00/01	01/02	02/03	03/04	04/05	05/06	06/07	07/08	08/09	09/10
Aberdeen Actual		38	42	42	47	50	46	50	49	50	50	51	
Aberdeen Target										51	52.08	53.69	55.35
Scotland		39	44	46	50	51	52						
Consortium							51	51	53	53	55	55	

5 to 14 Attainment - Secondary Mathematics Attainment 2008/2009 (Source PM+QA team)

Definition	Percentage of S2 pupils meeting or exceeding level E in mathematics.						
	2003/04	2004/05	2005/06	2006/07	2007/08	2008/09	
Aberdeen	53%	53%	56%	53%	59%	58%	
Consortium*	58%	59%	60%	62%	63%	64%	

5 to 14 Mathematics Attainment in Secondary Schools

4 Year Targets(%)

2003/04:	55
2004/05:	55
2005/06:	no target set
2006/07:	63(predicted)
2007/08:	64.95
2008/09:	66.96
2009/00:	69.03

Target - 3% increase year-on year to 2010

Analysis:	The proportion of S2 pupils meeting or exceeding level E in mathematics has decreased by 1% from 2007/086 to 2008/09. Aberdeen mathematics attainment in S2 has always been below the national average. Four secondary schools reported a decrease in S2 mathematics attainment, 7 schools reported increases and one school remained at the same level. Statistically significant upward trend since 1997/98.
Action:	As part of the Quality Improvement Framework, Education Officers undertake School Improvement Visits throughout the year. Regular performance monitoring is undertaken on a school by school, proportionate basis. Further proposals to monitor 5-14 performance are currently being considered. Curriculum for Excellence will introduce age and stage measures in due course.

*Consortium data is aggregated data from LA's that have agreed to share data. Individual LA's data cannot be identified from consortium

	97/98	98/99	99/00	00/01	01/02	02/03	03/04	04/05	05/06	06/07	07/08	08/09	09/10
Aberdeen	39	40	38	48	50	51	53	53	56	53	59	58	
Aberdeen Target										63	64.95	66.96	69.03
Scotland	42	42	47	51	54	54	60						
Consortium							58	59	60	62	63	64	

SQA Examination Performance (Source: PM+QA team)

Definition	Percentage of S4 roll achieving English and Maths at level 3 or better (Access 3 cluster or Standard Grade 5-6) by the end of S4.									
		2003/04	2004/05	2005/06	2006/07	2007/08	2008/09			
	Aberdeen	92.9%	92.3%	92.7%	93.7%	92.6%	94.0%			
	Scotland	91.0%	91.0%	90.5%	91.5%	91.9%	92.0%			

% Pupils Achieving																																																
	<table border="1"> <thead> <tr> <th></th> <th>1999</th> <th>2000</th> <th>2001</th> <th>2002</th> <th>2003</th> <th>2004</th> <th>2005</th> <th>2006</th> <th>2007</th> <th>2008</th> <th>2009</th> </tr> </thead> <tbody> <tr> <td>— Aberdeen City</td> <td>93.062</td> <td>92.212</td> <td>93.297</td> <td>92.262</td> <td>92.908</td> <td>92.257</td> <td>92.704</td> <td>93.654</td> <td>91.763</td> <td>92.605</td> <td>94</td> </tr> <tr> <td>— Scotland</td> <td>92.421</td> <td>92.385</td> <td>91.975</td> <td>91.14</td> <td>91.217</td> <td>91.007</td> <td>90.489</td> <td>91.185</td> <td>91.51</td> <td>91.858</td> <td>92</td> </tr> <tr> <td>— Comparators</td> <td></td> <td></td> <td></td> <td></td> <td></td> <td></td> <td>90</td> <td>91</td> <td>91</td> <td>92</td> <td>92</td> </tr> </tbody> </table>		1999	2000	2001	2002	2003	2004	2005	2006	2007	2008	2009	— Aberdeen City	93.062	92.212	93.297	92.262	92.908	92.257	92.704	93.654	91.763	92.605	94	— Scotland	92.421	92.385	91.975	91.14	91.217	91.007	90.489	91.185	91.51	91.858	92	— Comparators							90	91	91	92
	1999	2000	2001	2002	2003	2004	2005	2006	2007	2008	2009																																					
— Aberdeen City	93.062	92.212	93.297	92.262	92.908	92.257	92.704	93.654	91.763	92.605	94																																					
— Scotland	92.421	92.385	91.975	91.14	91.217	91.007	90.489	91.185	91.51	91.858	92																																					
— Comparators							90	91	91	92	92																																					

4 Year Targets(%)	
2003/04:	0
2004/05:	0
2005/06:	no target set
2006/07:	0
2007/08:	95
2008/09:	96
2009/00:	

Analysis:	<p>The percentage of pupils achieving Foundation level English and Maths increased slightly in Aberdeen 2009 but there has been no long term trend. Increase for 2 consecutive years.</p> <p>No significant trend since 1999.</p> <p>No significant trend since 2004.</p>
Action:	<p>Detailed actions will be identified on a school by school basis following SQA Standard tables and Graphs (STACS) discussions with Headteachers and colleagues throughout the Education, Culture and Sports Service</p>

The comparator or family average provides information on the average performance of 5 *similar* Education Authorities. Users are urged to exercise particular caution when using the family averages for the city EAs of Aberdeen, Dundee, Edinburgh and Glasgow, as these have very few EAs to which they are considered very close.

- Aberdeen City Comparator Authorities are:
- Argyll and Bute
 - Dundee City
 - Edinburgh, City of
 - Renfrewshire
 - South Ayrshire

SQA Examination Performance (Source: PM+QA team)

Definition	Percentage of S4 roll achieving 5+ awards at level 4 or better (Intermediate 1 at A-C, Standard Grade at 3-4) by the end of S4.						
	2003/04	2004/05	2005/06	2006/07	2007/08	2008/09	
Aberdeen	76.6%	74.3%	77.1%	71.4%	71.1%	72.0%	
Scotland	76.6%	76.1%	76.8%	75.6%	76.2%	77.0%	

5+ Awards at SCQF Level 4 or Better by the End of S4

	1999	2000	2001	2002	2003	2004	2005	2006	2007	2008	2009
Aberdeen City	73.493	74.135	76.676	75.012	76.643	74.347	77.092	75.012	71.387	71.067	72
Scotland	75.234	76.732	76.808	76.694	76.392	76.571	76.116	76.831	75.594	76.206	77
Comparators							75	75	75	75	76

4 Year Targets(%)

Analysis:	The percentage of pupils achieving 5 or more awards at General level or better increased slightly in Aberdeen in 2009 but there has been no long term trend. No significant trend since 1999. No significant trend since 2004.
Action:	Detailed actions will be identified on a school by school basis following SQA Standard tables and Graphs (STACS) discussions with Headteachers and colleagues throughout the Education, Culture and Sports Service

The comparator or family average provides information on the average performance of 5 similar Education Authorities.

SQA Examination Performance (Source: PM+QA team)

Definition	Percentage of S4 roll achieving 5 or more awards at level 5 or better (Intermediate 2 at A-C, Standard Grade 1-2) by the end of S4.						
		2003/04	2004/05	2005/06	2006/07	2007/08	2008/09
	Aberdeen	34.9%	33.7%	35.2%	31.8%	32.9%	30.0%
	Scotland	34.6%	34.2%	34.8%	33.1%	34.4%	35.0%

5+ Awards at SCQF Level 5 or Better by the End of S4											
% Pupils Achieving	1999	2000	2001	2002	2003	2004	2005	2006	2007	2008	2009
Aberdeen City	28.086	31.298	32.231	32.035	33.853	34.869	33.724	35.151	31.792	32.903	30
Scotland	31.6	32.864	33.812	33.903	33.971	34.587	34.168	34.821	33.062	34.44	35
Comparators							35	34	33	34	36

4 Year Targets(%)		
2003/04:	0	
2004/05:	0	
2005/06:	no target set	
2005/06:	no target set	
2007/08:	36.4	
2008/09:	37.2	
2009/00:	0.0	

Analysis: The percentage of pupils achieving 5 or more awards at Credit level or better increased slightly in Aberdeen in 2009 but there has been a significant downward trend since 2004. No significant trend since 1999.
Significant downward trend since 2004.

Action: Detailed actions will be identified on a school by school basis following SQA Standard tables and Graphs (STACS) discussions with Headteachers and colleagues throughout the Education, Culture and Sports Service

The comparator or family average provides information on the average performance of 5 *similar* Education Authorities. Users are urged to exercise particular caution when using the family averages for the city EAs of Aberdeen, Dundee, Edinburgh and Glasgow, as these have very few EAs to which they are considered very close.

- Aberdeen City Comparator Authorities are:
- Argyll and Bute
 - Dundee City
 - Edinburgh, City of
 - Renfrewshire
 - South Ayrshire

SQA Examination Performance (Source: PM+QA team)

Definition	Percentage of S4 roll achieving 5 or more awards at level 5 or better (Intermediate 2 at A-C and Standard Grade 1-2) by the end of S5.										
			2003/04	2004/05	2005/06	2006/07	2007/08	2008/09			
	Aberdeen		41.9%	45.0%	45.3%	45.5%	41.3%	42.0%			
	Scotland		44.9%	45.5%	44.8%	45.8%	45.1%	47.0%			

	1999	2000	2001	2002	2003	2004	2005	2006	2007	2008	2009
Aberdeen City	33.811	37.751	42.74	42.149	41.942	44.965	45.273	45.255	45.513	41.281	42
Scotland	35.464	40.232	43.188	44.669	44.915	44.927	45.475	44.847	45.759	45.069	47
Comparators							45	45	45	46	46

2003/04:	0
2004/05:	0
2005/06:	no target set
2005/06:	no target set
2007/08:	46.0
2008/09:	47.0
2009/00:	0.0

Analysis:	As attainment by the end of S5 is calculated from the relevant S4 roll, the S4 to S5 staying on rate has an effect on the measures of attainment by the end of S5. Staying on rates in Aberdeen have generally been lower than the national rate. The percentage of pupils achieving 5 or more awards at Credit level or better increased slightly in Aberdeen in 2009. After significant improvement between 1999 and 2004 in Aberdeen and Nationally, there has been no significant trend since 2004. Significant upward trend since 1999. No significant trend since 2004.
Action:	Detailed actions will be identified on a school by school basis following SQA Standard tables and Graphs (STACS) discussions with Headteachers and colleagues throughout the Education, Culture and Sports Service

The comparator or family average provides information on the average performance of 5 similar Education Authorities. Users are urged to exercise particular caution when using the family averages for the city EAs of Aberdeen, Dundee, Edinburgh and Glasgow, as these have very few EAs to which they are considered very close.

- Aberdeen City Comparator Authorities are:
- Argyll and Bute
 - Dundee City
 - Edinburgh, City of
 - Renfrewshire
 - South Ayrshire

SQA Examination Performance (Source: PM+QA team)

Definition	Percentage of S4 roll achieving 1 or more awards at level 6 or better (Higher at A-C) by the end of S5.						
	2003/04	2004/05	2005/06	2006/07	2007/08	2008/09	
	Aberdeen	39.6%	39.3%	39.0%	39.4%	36.8%	39.0%
	Scotland	39.0%	38.8%	38.0%	38.5%	38.7%	40.0%

	1999	2000	2001	2002	2003	2004	2005	2006	2007	2008	2009
Aberdeen City	38.9454	40.5263	40.5769	39.5317	38.1962	39.6217	39.2874	39.0306	39.3654	36.8015	39
Scotland	39.0428	41.3592	39.5021	39.4177	39.3863	39.0006	38.7612	38.0374	38.539	38.7053	40
Comparators							38	39	38	40	40

Analysis:	The percentage of pupils achieving 1 or more awards at Higher Grade A-C or better increased slightly in Aberdeen in 2009 but there has been no long term trend. No significant trend since 1999. No significant trend since 2004.
Action:	Detailed actions will be identified on a school by school basis following SQA Standard tables and Graphs (STACS) discussions with Headteachers and colleagues throughout the Education, Culture and Sports Service

The comparator or family average provides information on the average performance of 5 *similar* Education Authorities. Users are urged to exercise particular caution when using the family averages for the city EAs of Aberdeen, Dundee, Edinburgh and Glasgow, as these have very few EAs to which they are considered very close.

- Aberdeen City Comparator Authorities are:
- Argyll and Bute
 - Dundee City
 - Edinburgh, City of
 - Renfrewshire
 - South Ayrshire

SQA Examination Performance (Source: PM+QA team)

Definition	Percentage of S4 roll achieving 3 or more awards at level 6 or better (Higher at A-C) by the end of S5.						
	2003/04	2004/05	2005/06	2006/07	2007/08	2008/09	
	Aberdeen	24.8%	24.0%	22.0%	24.4%	22.1%	23.0%
	Scotland	22.7%	22.7%	21.7%	22.1%	22.4%	23.0%

	1999	2000	2001	2002	2003	2004	2005	2006	2007	2008	2009
Aberdeen City	21.924	22.584	23.99	22.911	23.164	24.775	23.99	22.041	24.393	22.11	23
Scotland	20.827	23.273	23.043	22.814	22.612	22.71	22.651	21.663	22.062	22.366	23
Comparators							23	23	22	23	23

Analysis:	The percentage of pupils achieving 3 or more awards at Higher Grade A-C or better increased slightly in Aberdeen in 2009 but there has been no long term trend. No significant trend since 1999. No significant trend since 2004.
-----------	---

Action:	Detailed actions will be identified on a school by school basis following SQA Standard tables and Graphs (STACS) discussions with Headteachers and colleagues throughout the Education, Culture and Sports Service
---------	--

The comparator or family average provides information on the average performance of 5 *similar* Education Authorities. Users are urged to exercise particular caution when using the family averages for the city EAs of Aberdeen, Dundee, Edinburgh and Glasgow, as these have very few EAs to which they are considered very close.

Aberdeen City Comparator Authorities are:

- Argyll and Bute
- Dundee City
- Edinburgh, City of
- Renfrewshire
- South Ayrshire

SQA Examination Performance (Source: PM+QA team)

Definition	Percentage of S4 roll achieving 1 or more awards at level 6 or better (Higher at A-C) by the end of S6						
	2003/04	2004/05	2005/06	2006/07	2007/08	2008/09	
Aberdeen	42.7%	44.8%	44.1%	43.8%	44.3%	41.0%	
Scotland	43.5%	43.1%	43.0%	42.5%	43.2%	44.0%	

1+ Awards at SCQF Level 6 or Better by the End of S6

	1999	2000	2001	2002	2003	2004	2005	2006	2007	2008	2009
Aberdeen City	41.647	42.414	44.258	45.385	43.802	42.73	44.775	44.086	43.776	44.323	41
Scotland	43.121	43.397	45.484	43.669	43.585	43.535	43.074	43.029	42.452	43.2	44
Comparators							43	43	44	43	45

4 Year Targets(%)

Analysis:	<p>As attainment by the end of S6 is calculated from the relevant S4 roll, the S4 to S6 staying on rate has an effect on the measures of attainment by the end of S6. Staying on rates in Aberdeen have generally been lower than the national rate. The percentage of pupils achieving 1 or more awards at Higher Grade A-C or better decreased significantly in Aberdeen in 2009 but there has been no long term trend. Significant decrease between 2008 and 2009.</p> <p>No significant trend since 1999.</p> <p>No significant trend since 2004.</p>
Action:	<p>Detailed actions will be identified on a school by school basis following SQA Standard tables and Graphs (STACS) discussions with Headteachers and colleagues throughout the Education, Culture and Sports Service</p>

The comparator or family average provides information on the average performance of 5 *similar* Education Authorities. Users are urged to exercise particular caution when using the family averages for the city EAs of Aberdeen, Dundee, Edinburgh and Glasgow, as these have very few EAs to which they are considered very close.

- Aberdeen City Comparator Authorities are:
- Argyll and Bute
 - Dundee City
 - Edinburgh, City of
 - Renfrewshire
 - South Ayrshire

SQA Examination Performance (Source: PM+QA team)

Definition	Percentage of S4 roll achieving 3 or more awards at level 6 or better (Higher at A-C) by the end of S6						
	2003/04	2004/05	2005/06	2006/07	2007/08	2008/09	
	Aberdeen	31.0%	32.6%	32.2%	29.7%	32.5%	30.0%
	Scotland	30.6%	30.1%	30.0%	29.4%	30.0%	31.0%

	1999	2000	2001	2002	2003	2004	2005	2006	2007	2008	2009
Aberdeen City	29.498	30.481	31.914	33.125	31.864	30.951	32.624	32.162	29.745	32.474	30
Scotland	29.261	30.247	31.835	31.021	30.713	30.614	30.122	30.018	29.432	30.007	31
Comparators							31	30	31	30	32

Analysis:	<p>The percentage of pupils achieving 3 or more awards at Higher Grade A-C or better decreased slightly in Aberdeen in 2009 but there has been no long term trend. No significant trend since 1999.</p> <p>No significant trend since 2004.</p>
Action:	<p>Detailed actions will be identified on a school by school basis following SQA Standard tables and Graphs (STACS) discussions with Headteachers and colleagues throughout the Education, Culture and Sports Service</p>

The comparator or family average provides information on the average performance of 5 *similar* Education Authorities. Users are urged to exercise particular caution when using the family averages for the city EAs of Aberdeen, Dundee, Edinburgh and Glasgow, as these have very few EAs to which they are considered very close.

- Aberdeen City Comparator Authorities are:
- Argyll and Bute
 - Dundee City
 - Edinburgh, City of
 - Renfrewshire
 - South Ayrshire

SQA Examination Performance (Source: PM+QA team)

Definition	Percentage of S4 roll achieving 5 or more awards at level 6 or better (Higher at A-C) by the end of S6.						
	2003/04	2004/05	2005/06	2006/07	2007/08	2008/09	
	Aberdeen	20.4%	21.9%	22.1%	20.5%	21.7%	20.0%
	Scotland	19.4%	19.4%	19.7%	19.2%	19.7%	20.0%

5+ Awards at SCQF Level 6 or Better by the End of S6

	1999	2000	2001	2002	2003	2004	2005	2006	2007	2008	2009
— Aberdeen City	17.809	19.704	19.761	20.577	20.156	20.404	21.891	22.138	20.459	21.715	20
— Scotland	17.347	18.933	19.957	19.693	19.632	19.616	19.443	19.7	19.195	19.727	20
— Comparators							20	20	20	19	22

4 Year Targets(%)

Analysis:	<p>The percentage of pupils achieving 5 or more awards at Higher Grade A-C or better decreased slightly in Aberdeen in 2009. After significant improvement between 1999 and 2004 in Aberdeen and Nationally, there has been no significant trend since 2004. Significant upward trend since 1999.</p> <p>No significant trend since 2004.</p>
Action:	<p>Detailed actions will be identified on a school by school basis following SQA Standard tables and Graphs (STACS) discussions with Headteachers and colleagues throughout the Education, Culture and Sports Service</p>

The comparator or family average provides information on the average performance of 5 *similar* Education Authorities. Users are urged to exercise particular caution when using the family averages for the city EAs of Aberdeen, Dundee, Edinburgh and Glasgow, as these have very few EAs to which they are considered very close.

- Aberdeen City Comparator Authorities are:
- Argyll and Bute
 - Dundee City
 - Edinburgh, City of
 - Renfrewshire
 - South Ayrshire

SQA Examination Performance (Source: PM+QA team)

Definition	Percentage of S4 roll achieving 1 or more awards at level 7 or better (Advanced Higher at A-C) by the end of S6.						
	2003/04	2004/05	2005/06	2006/07	2007/08	2008/09	
	Aberdeen	14.2%	16.5%	15.7%	14.0%	14.3%	14.0%
	Scotland	12.3%	12.1%	12.5%	12.2%	12.7%	13.0%

	1999	2000	2001	2002	2003	2004	2005	2006	2007	2008	2009
Aberdeen City	10.584	11.656	10.335	14.231	14.463	14.243	16.501	15.724	13.98	14.328	14
Scotland	9.8639	10.113	11.205	11.558	11.894	12.259	12.055	12.525	12.186	12.669	13
Comparators							13	14	14	13	16

Analysis:	The percentage of pupils achieving 1 or more awards at Advanced Higher Grade A-C or better decreased slightly in Aberdeen in 2009. After significant improvement between 1999 and 2004 in Aberdeen and Nationally, there has been no significant trend since 2004. Significant upward trend since 1999. No significant trend since 2004.
Action:	Detailed actions will be identified on a school by school basis following SQA Standard tables and Graphs (STACS) discussions with Headteachers and colleagues throughout the Education, Culture and Sports Service

The comparator or family average provides information on the average performance of 5 *similar* Education Authorities. Users are urged to exercise particular caution when using the family averages for the city EAs of Aberdeen, Dundee, Edinburgh and Glasgow, as these have very few EAs to which they are considered very close.

- Aberdeen City Comparator Authorities are:
- Argyll and Bute
 - Dundee City
 - Edinburgh, City of
 - Renfrewshire
 - South Ayrshire

Library and Information Services Summary Statistics (Source: L&I Service)

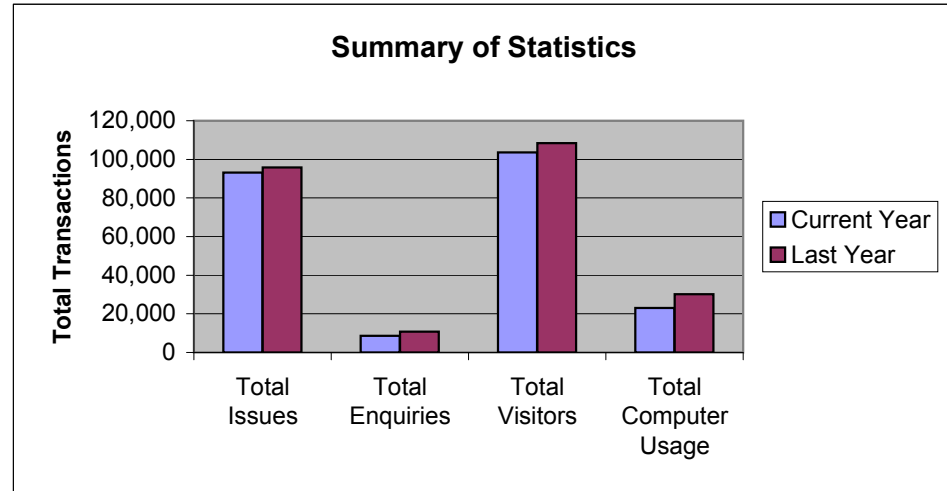
Performance Indicators: July 2009

Summary of Use

	Current Year	Last Year
Total Issues	93,091	95,757
Total Enquiries	8,604	10,726
Total Requests and Reservations	1,982	1,463
Total Visitors	103,516	108,362
Total Computer Usage	22,957	30,091
Total Library Webpage Hits	50,277	7,448
Total WI FI Minutes Used	1,314	730
Total WI FI New Customers	64	107

Summary of System Statistics

	Current Year	Last Year
Arts Equipment Issues	855	586
Total Monthly Issues	92,236	95,171
Days Open	27	25

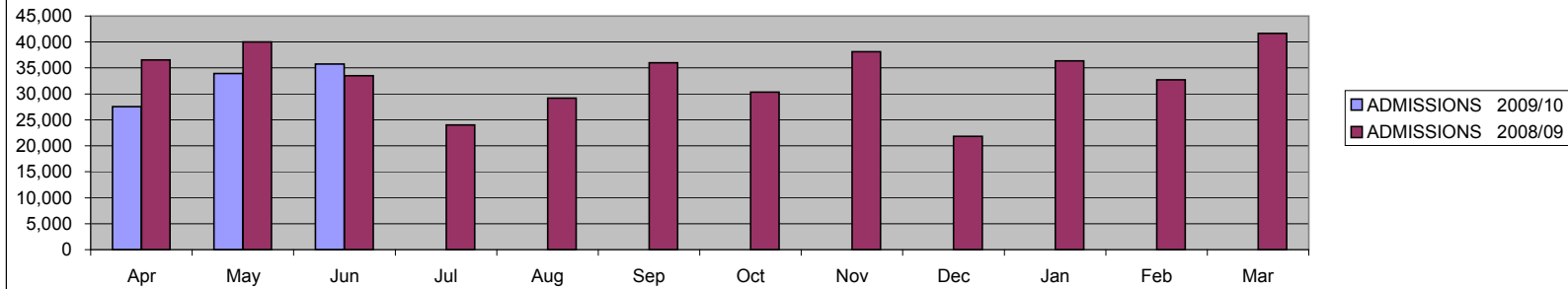


Tillydrone Library Netloan PC's down 20th July from 12.20pm -2.20pm

North Area Summary Admissions 08/09 v 09/10 (Source: QA team - Arts, Culture, Heritage & Sport)

MONTH	ADMISSIONS 2008/09	Cum 07/08	ADMISSIONS 2009/10	Cum 08/09	Monthly Variance	Variance on cum figure
Apr	36,563	36,563	27,565	27,565	-8998	-8,998
May	40,036	76,599	33,917	61,482	-6119	-15,117
Jun	33,528	110,127	35,746	97,228	2218	-12,899
Jul	24,048	134,175	0	97,228	-24048	-36,947
Aug	29,200	163,375	0	97,228	-29200	-66,147
Sep	36,016	199,391	0	97,228	-36016	-102,163
Oct	30,358	229,749	0	97,228	-30358	-132,521
Nov	38,141	267,890	0	97,228	-38141	-170,662
Dec	21,859	289,749	0	97,228	-21859	-192,521
Jan	36,368	326,117	0	97,228	-36368	-228,889
Feb	32,692	358,809	0	97,228	-32692	-261,581
Mar	41,640	400,449	0	97,228	-41640	-303,221

North Area Sports Facility Admissions Summary



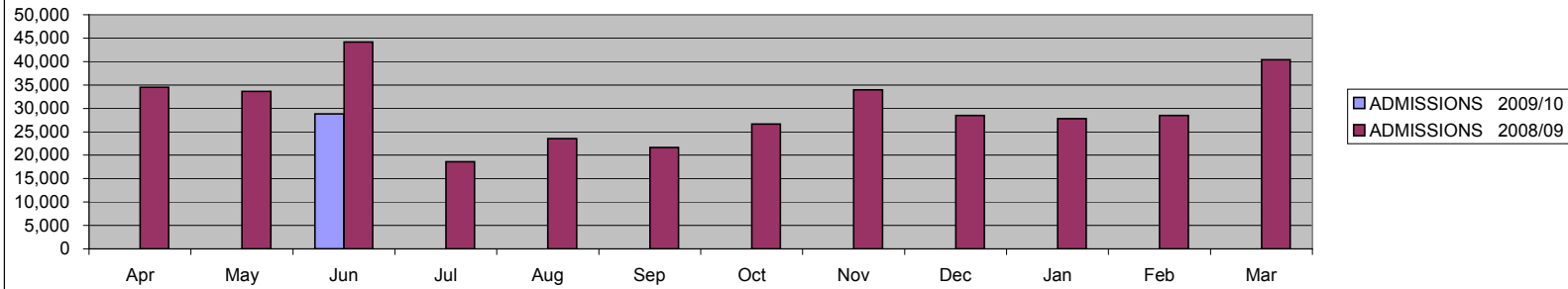
Comments

Individual facility performance data is illustrated on separate worksheets (available on request)

South Area Summary Admissions 08/09 v 09/10 (Source: QA team - Arts, Culture, Heritage & Sport)

MONTH	ADMISSIONS 2008/09	Cum 08/09	ADMISSIONS 2009/10	Cum 09/10	Monthly Variance	Variance on cum figure
Apr	34,506	34,506	0	0	-34,506	-34,506
May	33,624	68,130	0	0	-33,624	-68,130
Jun	44,155	112,285	28,831	28,831	-15,324	-83,454
Jul	18,622	130,907	0	28,831	-18,622	-102,076
Aug	23,543	154,450	0	28,831	-23,543	-125,619
Sep	21,660	176,110	0	28,831	-21,660	-147,279
Oct	26,651	202,761	0	28,831	-26,651	-173,930
Nov	33,965	236,726	0	28,831	-33,965	-207,895
Dec	28,473	265,199	0	28,831	-28,473	-236,368
Jan	27,801	293,000	0	28,831	-27,801	-264,169
Feb	28,498	321,498	0	28,831	-28,498	-292,667
Mar	40,393	361,891	0	28,831	-40,393	-333,060

South Area Sports Facility Admissions Summary

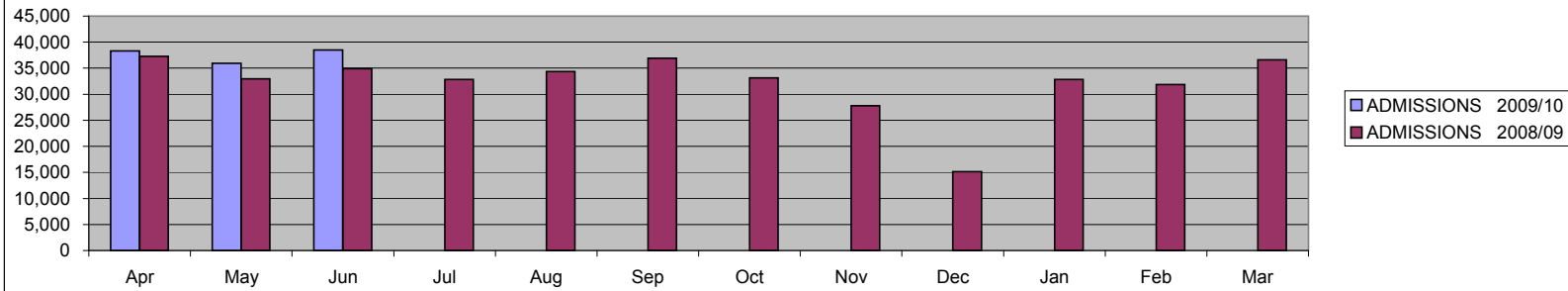


Comments

Central Area Summary Admissions 08/09 v 09/10 (Source: QA team - Arts, Culture, Heritage & Sport)

MONTH	ADMISSIONS 2008/09	Cum 07/08	ADMISSIONS 2009/10	Cum 08/09	Monthly Variance	Variance on cum figure
Apr	37,274	37,274	38,287	38,287	1013	1,013
May	32,969	70,243	35,953	74,240	2984	3,997
Jun	34,883	105,126	38,484	112,724	3601	7,598
Jul	32,818	137,944	0	112,724	-32818	-25,220
Aug	34,373	172,317	0	112,724	-34373	-59,593
Sep	36,919	209,236	0	112,724	-36919	-96,512
Oct	33,116	242,352	0	112,724	-33116	-129,628
Nov	27,808	270,160	0	112,724	-27808	-157,436
Dec	15,129	285,289	0	112,724	-15129	-172,565
Jan	32,859	318,148	0	112,724	-32859	-205,424
Feb	31,872	350,020	0	112,724	-31872	-237,296
Mar	36,631	386,651	0	112,724	-36631	-273,927

Central Area Sport Facility Admissions Summary



Comments